



Series HTJ



Low-profile design of the HTJ pull dual pressure sensors are specifically designed for experimental machine to meet the different requirements of precision test and also be used to measure various forces.

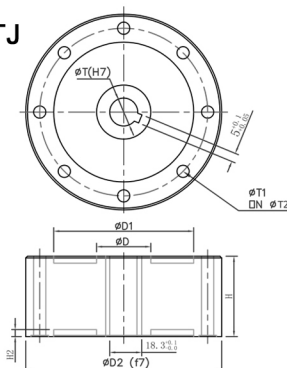
Features

- Capacities: 0.5, 1, 2, 5, 10, 20, 25 and 30 tons
- Compact size with low profile
- Low deflection for high output
- Electroless nickel-plated alloy tool steel construction
- Off center load compensated

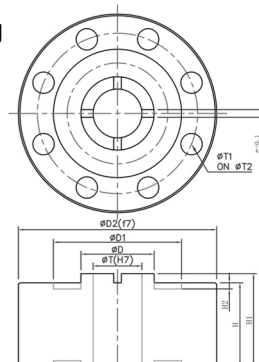
SPECIFICATIONS

PARAMETER	VALUE	UNIT
Standard capacities	500kg, 1t, 2t, 5t, 10t, 20t, 25t, 30t	Vdc or Vac rms
Excitation, recommended	10VAC/DC	Vdc or Vac rms
Excitation, maximum	15VAC/DC	mV/V
Rated output—R.O.	3mV/V \pm 0.25%	mV/V
Non-linearity	0.05%	\pm % of rated output
Hysteresis	0.05%	\pm % of rated output
Non-repeatability	0.02%	\pm % of rated output
Creep error (20 minutes)	0.03%	\pm % of rated output
Zero return	0.03%	\pm % of rated output
Compensated temperature of Zero	0.0015	\pm % of rated output/ $^{\circ}$ C
Compensated temperature of Output	0.0026	\pm % of applied load/ $^{\circ}$ C
Compensated temperature range	-10 $^{\circ}$ C to +40 $^{\circ}$ C	$^{\circ}$ C
Operating temperature range	-20 $^{\circ}$ C to +60 $^{\circ}$ C	$^{\circ}$ C
Zero balance	\pm 1%	\pm % of rated output
Input impedance	385 \pm 5 Ω	Ohms
Output impedance	350 \pm 3 Ω	Ohms
Insulation resistance	>5000M Ω	Mega-Ohms
Safe overload	150%	% of R.C.
Ultimate overload	300%	% of R.C.

500kg ~ 2t HTJ



5t ~ 30t HTJ



DIMENSIONS-mm

CAPACITY		D	D ₁	D ₂	H	H ₁	H ₂	T	T ₁	T ₂
500kg/1t/2t	mm	31	80	112	46	----	4	16	7	96
	(inch)	1.22	3.15	4.41	1.81	----	0.16	0.63	0.28	3.78
5t/10t	mm	48	84	130	55	61	4	32	14	105
	(inch)	1.89	3.31	5.12	2.17	2.4	0.16	1.26	0.43	4.13
20t/25t/30t	mm	72	130	182	80	86	4	39	15	154
	(inch)	2.83	5.12	7.17	3.15	3.39	0.16	1.54	0.59	6.06

* Specifications are subject to change without notice

WZO CONTROLS LTD