



Series SFS

2.5, 5, 10, 25, 50, 100, 250, 500, 1t, 2t, 3t, 5t kg



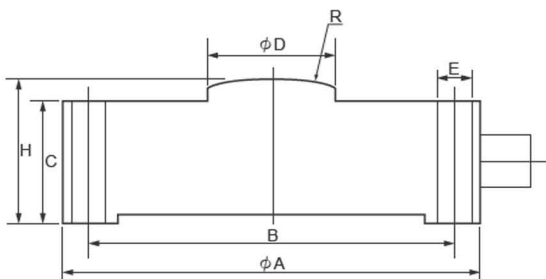
Features

- SFS Loadcell is a precision and small loadcell.
- It is compact and small.
- The sensing element is imbedded inside the structure and hermetically sealed.
- It is ideally used in force control machine, scales and general weight measurement.

SPECIFICATIONS

Rated Output	1.5mV/V
Total Error	0.1%
Repeatability	0.05%
Creep	0.05%/20min
Input Resistance	430 or 405 ± 25Ω
Output Resistance	350 ± 5Ω
Max. Excitation Voltage	10V
Recommended Excitation Voltage	3-8V
Compensated Temp.Range	-10°C~50°C
Safe Temp. Range	-20°C~70°C
Temp. Effect on Zero Balance	0.05%R.O./10°C
Temp. Effect on Rated Output	0.03%Load/10°C
Zero Balance	±3%R.O.
Safe Overload Rating	150%
Cable Length	3m
Cable Connection	Input:Red(+)Exci : Black(-)Exci Output:Green(+)Sign White(-)Sign

DIMENSIONS



kg	A	B	C	H	D	R	E
2.5, 5, 10, 25	35	31	15	18	5	20	4 × M2.5
50, 100, 250	40	35	17	20	8	30	4 × M3
500, 1t, 2t, 3t, 5t	50	46	22	25	12	40	4 × M4

* Specifications are subject to change without notice

WZO CONTROLS LTD