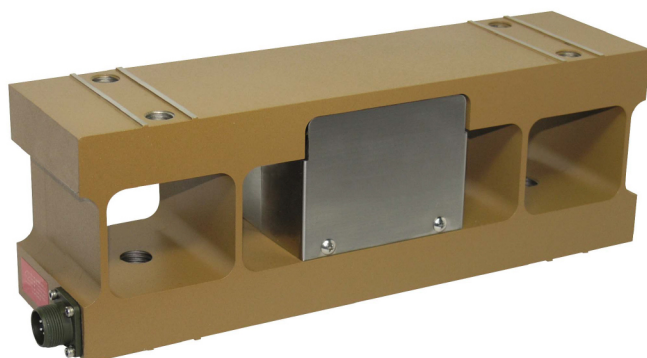




Series PBTK50

Pillow Block Type Load Cell
(Horizontal force 5kN ~ 50kN)

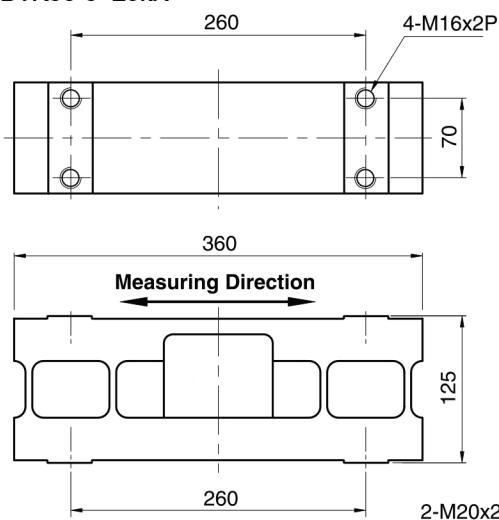


The PBTK50 series, used in metal processing lines and other hostile industrial applications, accurately and reliably measure strip tension, and are designed to mount directly under the roll bearing pillow blocks.

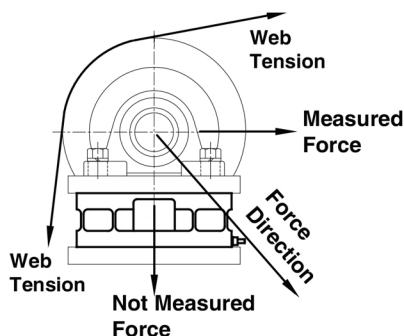
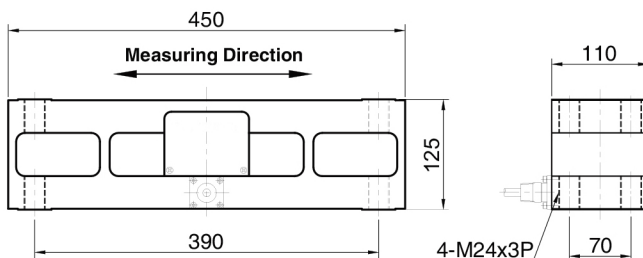
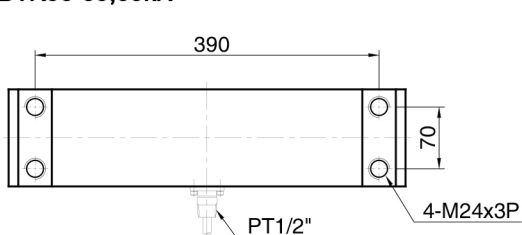
- Overload capability of 450% of rated capacity without zero shift.
- Excellent linearity from zero through the entire measuring range.
- Electroless nickel plated for corrosion resistance and fully sealed to IP67
- Full temperature compensation.

SPECIFICATIONS

PBTK50-5~20kN



PBTK50-30,50kN

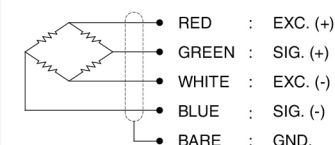


ORDERING INFORMATION

PBTK50 - 16kN

TYPE	CAPACITY
PBTK50	5, 10, 16, 20, 30, 50kN

WIRING INFORMATION



* Specifications are subject to change without notice

WZO CONTROLS LTD