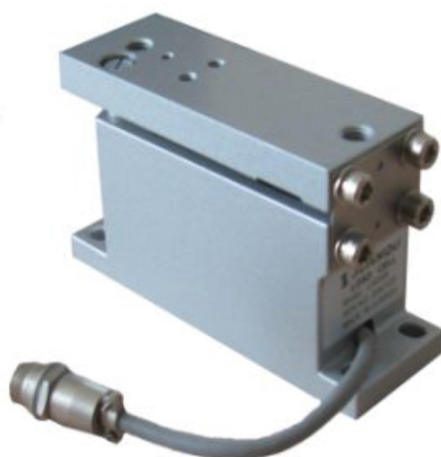




Series UPBL

Under Pillow Block Load Cells



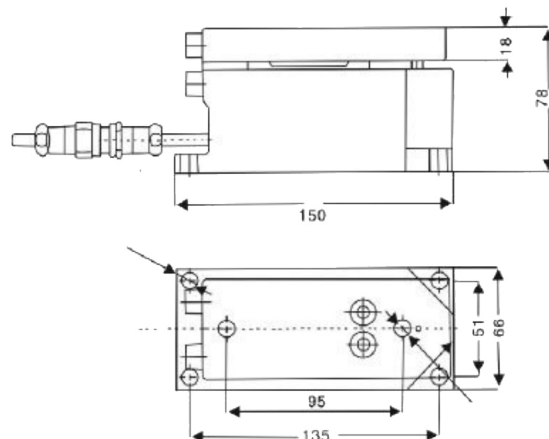
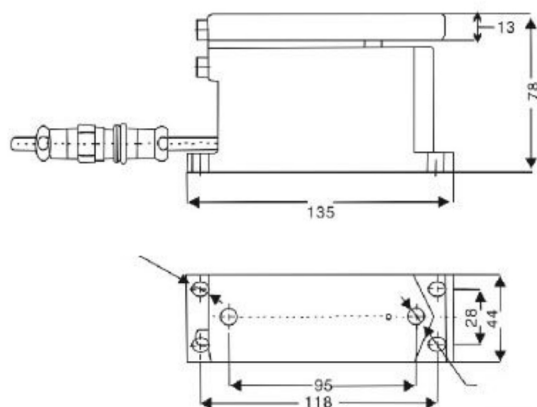
UPBL's-Series are used in conjunction with pillow block mounted, bearings and a shaft to create a durable and precise tension roll that's easy to install. With an IP67 rating the UPBL-Series offers an extreme level of protection and performance for applications in wet, dusty, chemical, corrosive or other harsh environments.

Features

- Enhanced reliability simplifies tension control protection and repeatability
- Full Semiconductor Wheatstone Bridge
- Built-in overload stops
- Chemical and corrosion resistant
- High overload protection protects workers, equipment and product
- Drilled and tapped to customer bearing specification

SPECIFICATIONS

Supply voltage	5V DC	Load Rating*– lb (N)	
Output	250 mV, nominal @ full load		
Deflection (at nominal force)	0.005 to 0.010 (0.3 to 0.25) typ. 0.010 (0.3 to 0.25) typ.		
		25 20 (100) / 50 (250) / 110 (500) / 225 (1000)	50 110 (500) / 280 (1250) / 560 (2500) / 1120 (5000)
Non-Linearity & hysteresis (combined)	±0.5% full span	Operating temp. ° F (° C)	–4 to +185 (–20 to +85)
Overload stops	Factory set @ 110%	Non-Repeatability	±0.2% full span
Enclosure protection class	IP67		



* Specifications are subject to change without notice

WZO CONTROLS LTD