



Series QTI(Flush Diaphragm)

High Performance Pressure Transducer



QTI(Flush Diaphragm) model is designed as a flush diaphragm suitable for sanitary use and is high precise for tank levels. Media-wetted materials there are composed by stainless steel 316L to have superior corrosion-resistant properties. It is applied to precise measurement and builds an inner amplifier to interface with various kinds of controllers.

Feature

- CE Certified
- VDC, mA output
- Measuring range 0~3.5MPa
- 0.15%FS accuracy
- Gauge and absolute measurement
- Piezoresistive silicon cell
- Stainless steel(316L) media-wetted materials

Applications

- Food Process control
- Water Resource management
- Sewage Water & Slurry
- Glues & Resins
- Oils & Lubricants
- Cosmetics & Pulps
- Abrasive Liquids

SPECIFICATIONS

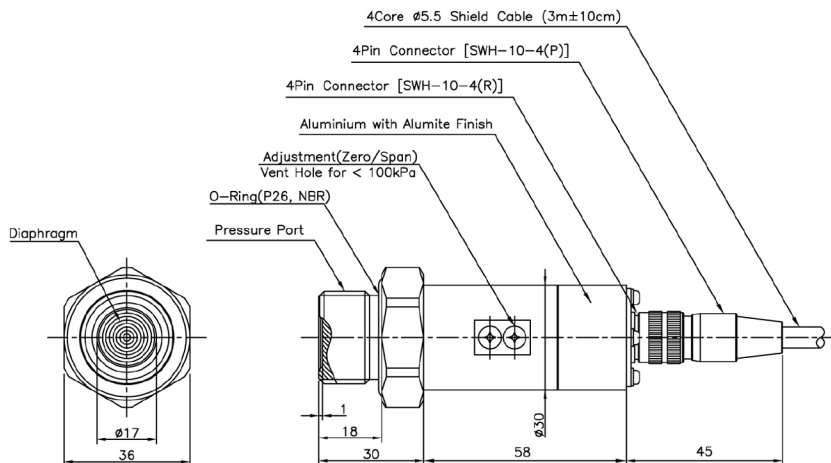
Range	
	0 ~ 5kPa ... 3.5MPa(Gauge)
	-100kPa ~ 0 ... 3.5MPa (Gauge)
	0 ~ 35kPa ... 3.5MPa (Absolute)
Performance	
Accuracy	±0.15%FS(RSS)
Thermal Effect on Zero	±0.03%FS/°C
Thermal Effect on Span	±0.03%FS/°C
Compensated Temperature Range	-10 ~ 70°C
Operating Temperature Range	-20 ~ 80°C
Electrical	
Excitation	11 ~ 28VDC
Output	0~5VDC, 1~5VDC, 0~10VDC(3, 4Wire) 4~20mA(2, 3 Wire)
Electrical Connection	Connector, Head, Din Connector
Physical	
Proof Pressure	X3
Burst Pressure	X4
Vibration	49.1m/s ² {5G}, 10~500Hz
Shock	490m/s ² {50G}
Pressure port	R(PT)3/4", G(PF)3/4"
Media-Wetted Materials	Stainless Steel 316L, Viton
Weight	Connector type : Approx. 180g (Sensor Only)

* Specifications are subject to change without notice

WZO CONTROLS LTD

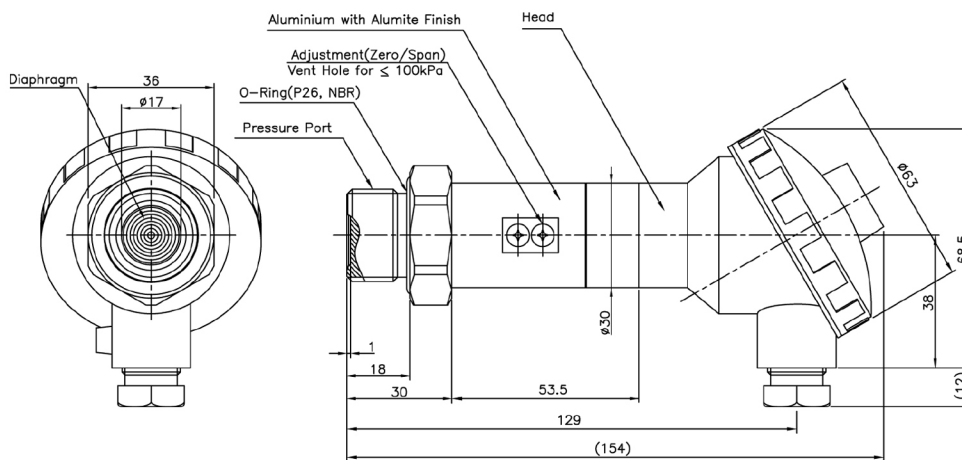
Dimension

► Connector Type



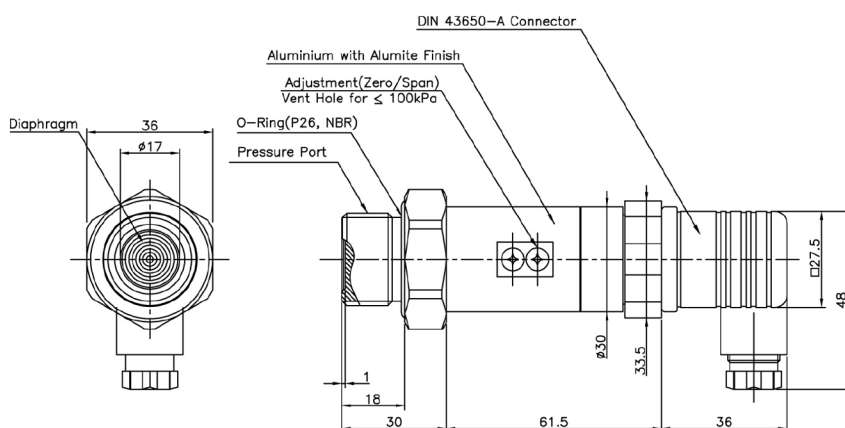
Pin No.	Wire Color	Connections		
		4Wire	3Wire	2Wire
1	Red	Input ⊕	Input ⊕	Input ⊕
2	White	Output ⊖	Common ⊖	×
3	Black	Input ⊖	×	Output ⊕
4	Green	Output ⊕	Output ⊕	×
5	Shield	Earth	Earth	Earth

► Head Type



No.	Connections
	2Wire
+	Input ⊕
⊕	Earth
-	Output ⊕

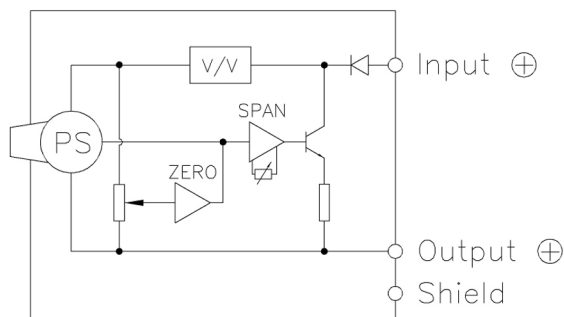
► Din connector Type



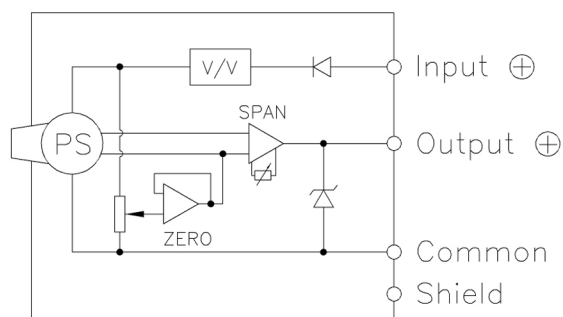
Pin No.	Connections	
	3Wire	2Wire
1	Input ⊕	Input ⊕
2	Common ⊖	Output ⊕
3	Output ⊕	×
⊕	Earth	Earth

Internal Circuit Diagram

► 2Wire mA Output Type



► 3, 4Wire mA, VDC Output Type



Ordering Information

Model Name		Q	T	I	B	0	0	0	5	R	I	P	G	Type of Pressure Measurement	
														G : Gauge	
														J : Absolute	
Output														Connecting Methods	
B : 4Wire 0~5V														P : Connector	
C : 3Wire 0~5V														H : Head	
D : 4Wire 1~5V														I : Din 43650-A connector	
E : 3Wire 1~5V															
F : 4Wire 4~20mA															
														Pressure port	
														W : R(PT)3/4"(Flush Diaphragm)	
														I : G(PF)3/4"(Flush Diaphragm)	
Pressure Range														Pressure Unit	
XXXX : Pressure														R : kPa	
														M : MPa	
														B : bar	
														K : kgf/cm ²	
														P : psi	
														H : mmHg	
														C : cmH ₂ O	