



Series QTI

High Performance Pressure Transducer



QTI model is high precise and its media-wetted materials are composed of stainless steel 316L, having excellent corrosion-resistant properties. It is applied to precise measurement and builds an inner amplifier to interface with various kinds of controllers.

Feature

- CE Certified
- VDC, mA output
- Measuring range 0~70MPa
- 0.15%FS accuracy
- Gauge and absolute measurement
- Piezoresistive silicon cell
- Stainless steel(316L) media-wetted materials

Applications

- Process control
- Hydraulics & Pneumatic
- Compressor Control
- Chillers
- Refrigeration Equipment

SPECIFICATIONS

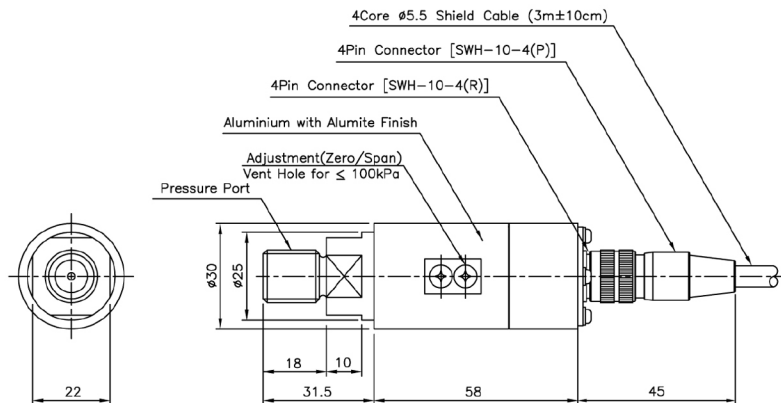
Range	
	0 ~ 5kPa ... 70MPa(Gauge)
	-100kPa ~ 0 ... 70MPa (Gauge)
	0 ~ 35kPa ... 70MPa (Absolute)
Performance	
Accuracy	$\pm 0.15\%FS(RSS)$
Thermal Effect on Zero	$\pm 0.03\%FS/^{\circ}C$
Thermal Effect on Span	$\pm 0.03\%FS/^{\circ}C$
Compensated Temperature Range	-10 ~ 70 $^{\circ}C$
Operating Temperature Range	-20 ~ 80 $^{\circ}C$
Electrical	
Excitation	11 ~ 28VDC
Output	0~5VDC, 1~5VDC, 0~10VDC(3, 4Wire) 4~20mA(2, 3 Wire)
Electrical Connection	Connector, Head, Din Connector
Physical	
Proof Pressure	X3 or 140MPa, Whichever is less.
Burst Pressure	X4 or 210MPa, Whichever is less.
Vibration	49.1m/s ² {5G}, 10~500Hz
Shock	490m/s ² {50G}
Pressure port	R(PT)1/8", G(PF)1/8", R(PT)1/4", G(PF)1/4", R(PT)3/8", G(PF)3/8"
Media-Wetted Materials	Stainless Steel 316L, Viton
Weight	Connector type : Approx. 140g (Sensor Only)

* Specifications are subject to change without notice

WZO CONTROLS LTD

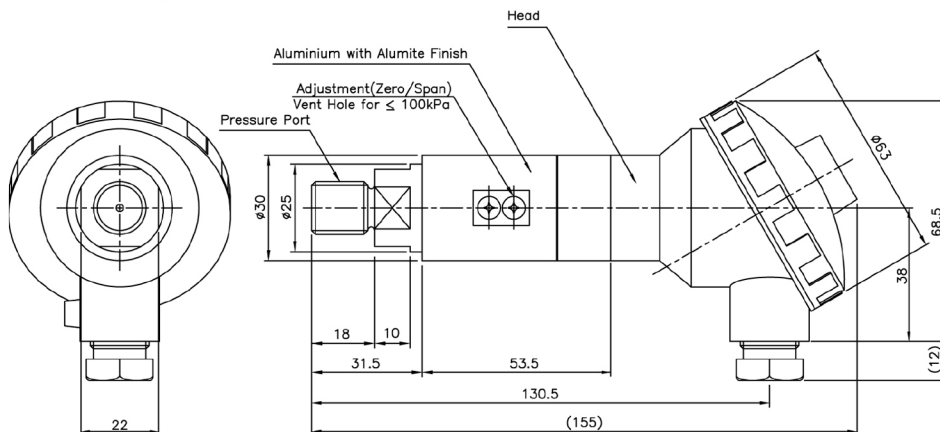
Dimension

► Connector Type



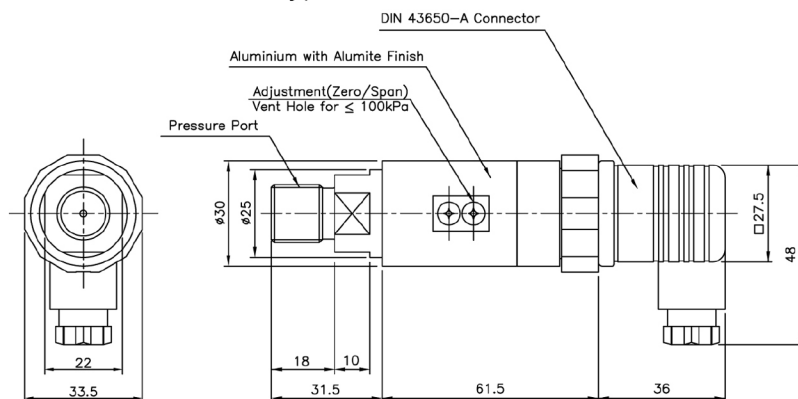
Pin No.	Wire Color	Connections		
		4Wire	3Wire	2Wire
1	Red	Input ⊕	Input ⊕	Input ⊕
2	White	Output ⊖	Common ⊖	×
3	Black	Input ⊖	×	Output ⊕
4	Green	Output ⊕	Output ⊕	×
5	Shield	Earth	Earth	Earth

► Head Type



No.	Connections
	2Wire
+	Input ⊕
⊕	Earth
-	Output ⊕

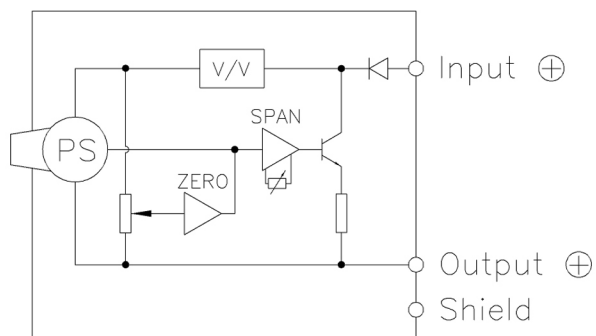
► Din connector Type



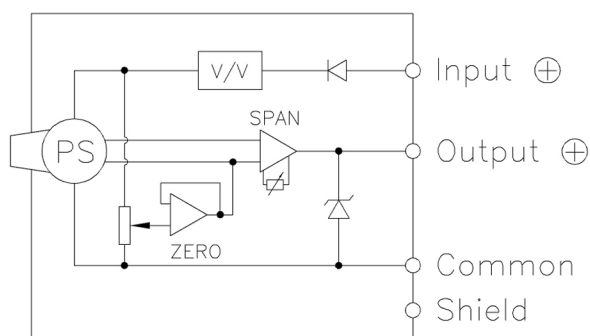
Pin No.	Connections	
	3Wire	2Wire
1	Input ⊕	Input ⊕
2	Common ⊖	Output ⊕
3	Output ⊕	×
⊕	Earth	Earth

Internal Circuit Diagram

► 2Wire mA Output Type



► 3, 4Wire mA, VDC Output Type



Ordering Information

Model Name	Q	T	I	B	0	1	0	0	R	A	P	G	Type of Pressure Measurement
													G : Gauge J : Absolute
Output													Connecting Methods
B : 4Wire 0~5V													P : Connector
C : 3Wire 0~5V													H : Head
D : 4Wire 1~5V													I : Din 43650-A connector
E : 3Wire 1~5V													
F : 4Wire 4~20mA													
													Pressure port
													A : R(PT)3/8"
													D : G(PF)1/4"
													B : G(PF)3/8"
													G : R(PT)1/8"
													C : R(PT)1/4"
													H : G(PF)1/8"
													Pressure Unit
													R : kPa
													M : MPa
													B : bar
													K : kgf/cm ²
													P : psi
													H : mmHg
													C : cmH ₂ O