



Series QUB

General Purpose Pressure Transducer



QUB model has applied Silicon Piezoresistive cell, which attached High Temperature Glass on Titanium. Since it does not use O-ring, there is no possibility of corrosion and leak. Its low price makes it suitable for industrial uses. With its various outputs, it may be interfaced with various controllers.

Feature

- CE Certified
- Built-in amplifier Circuit(VDC, mA)
- Measuring range -0.1 ~ 150MPa
- 0.5%FS accuracy
- Piezoresistive silicon cell
- Zero, Span Adjustable
- Stainless steel, Titanium media-wetted materials

Applications

- Process control
- Hydraulics & Pneumatic
- Compressor Control
- Chillers
- Refrigeration Equipment

SPECIFICATIONS

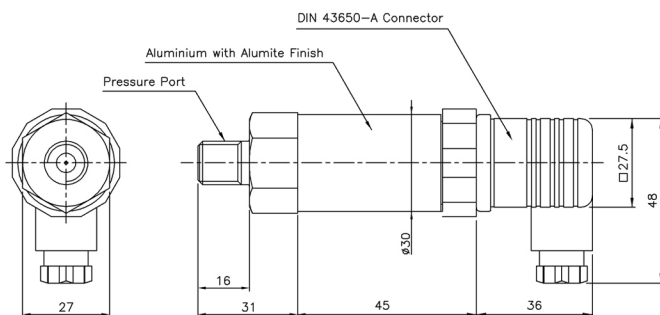
Range	
-100 ~ 0 ~ 100, 200, 500kPa / 1, 2, 3, 5, 10, 20, 30, 50, 100, 150MPa (Gauge)	
Performance	
Accuracy	±0.5%FS(RSS)
Thermal Effect on Zero	±0.05%FS/°C (≤200kPa : ±0.1%FS/°C)
Thermal Effect on Span	±0.05%FS/°C (≤200kPa : ±0.1%FS/°C)
Compensated Temperature Range	-10 ~ 70°C
Operating Temperature Range	-30 ~ 100°C
Electrical	
Excitation	11 ~ 28VDC(PTAA 12VDC Max.)
Output	10~20mV/V(Din Type Only) 0~5VDC, 1~5VDC, 0~10VDC(3, 4Wire), 4~20mA(2, 3 Wire)
Electrical Connection	Connector, Head, Din Connector
Physical	
Proof Pressure	150%FS Max.
Burst Pressure	200%FS Min.
Vibration	49.1m/s ² {5G}, 10~500Hz
Shock	490m/s ² {50G}
Pressure Port	R(PT)1/8", G(PF)1/8", R(PT)1/4", G(PF)1/4", R(PT)3/8", G(PF)3/8"
Media-Wetted Materials	Stainless Steel 304, Titanium 87%
Weight	Connector type : Approx. 140g (Sensor Only)

* Specifications are subject to change without notice

WZO CONTROLS LTD

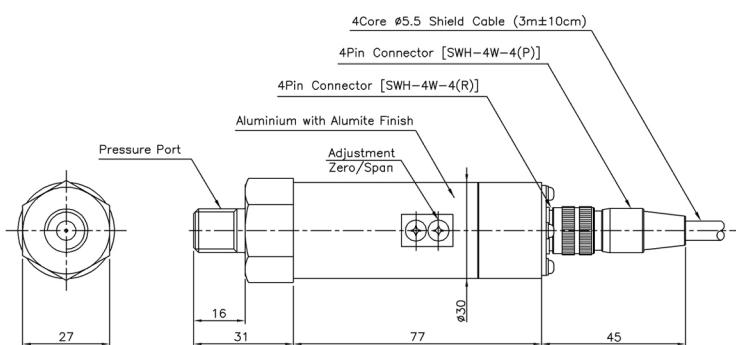
Dimension

► mV Output DIN Connector Type



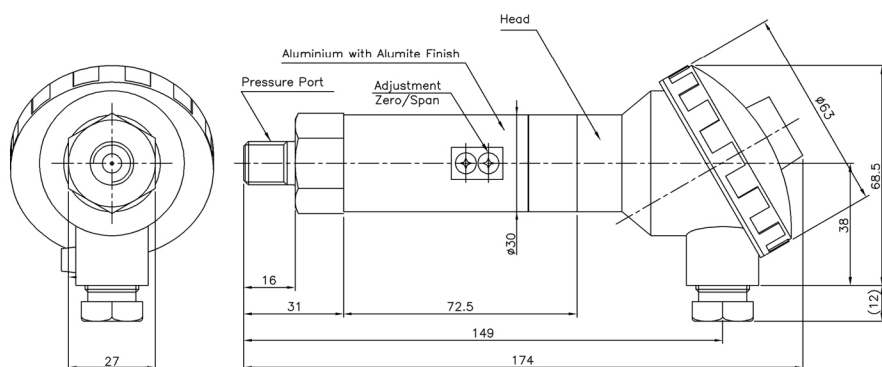
Pin No.	Connections
1	Input ⊕
2	Input ⊖
3	Output ⊕
⊕	Output ⊖

► Connector Type



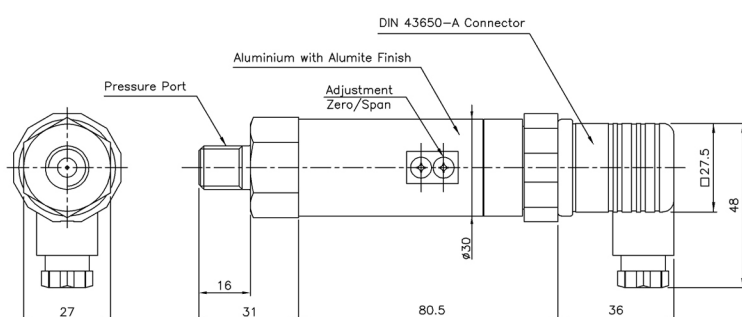
Pin No.	Wire Color	Connections		
		4Wire	3Wire	2Wire
1	Red	Input ⊕	Input ⊕	Input ⊕
2	White	Output ⊖	Common ⊖	×
3	Black	Input ⊖	×	Output ⊕
4	Green	Output ⊕	Output ⊕	×
5	Shield	Earth	Earth	Earth

► Head Type



No.	Connections	
	2Wire	
+	Input ⊕	
⊕	Earth	
-	Output ⊕	

► Din connector Type



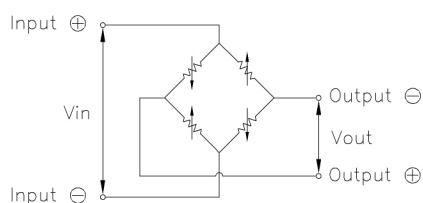
Pin No.	Connections	
	3Wire	2Wire
1	Input ⊕	Input ⊕
2	Common ⊖	Output ⊕
3	Output ⊕	×
⊕	Earth	Earth

* Specifications are subject to change without notice

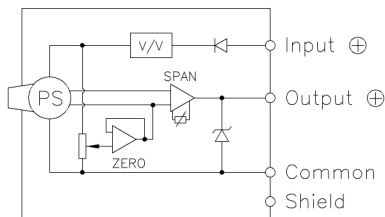


Internal Circuit Diagram

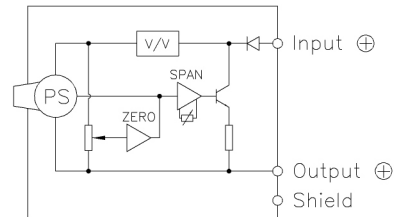
► mV Output Type



► 2Wire mA Output Type



► 3, 4Wire VDC Output Type



Ordering Information

Model Name	QUB	B	0100	R	A	P	A	Option
Output								A : Normal
A : mV/V								
B : 4Wire 0~5V								
C : 3Wire 0~5V								
D : 4Wire 1~5V								
E : 3Wire 1~5V								
F : 4Wire 4~20mA								
G : 3Wire 4~20mA								
H : 2Wire 4~20mA								
J : 3Wire 0~10V								
K : 4Wire 0~10V								
Pressure Range								
XXXX : Pressure								
CXXX : Compound Pressure								
Connecting Metmods								P : Connector
								H : Head
								I : Din 43650-A connector
Pressure port								
A : R(PT)3/8"								D : G(PF)1/4"
B : G(PF)3/8"								E : R(PT)1/2"
C : R(PT)1/4"								Q : G(PF)1/2"
Pressure Unit								
R : kPa								M : MPa
B : bar								K : kgf/cm ²
P : psi								H : mmHg