

# Piezoelectric Accelerometer (Isolated)

Model: 1101A2

## Features:

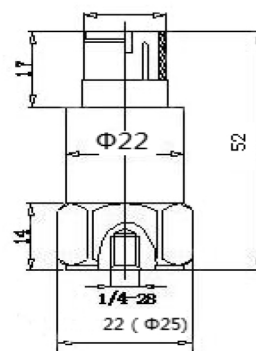
- Built-in IEPE, low noise, strong resistance of disturbance
- Isolated, Floating, industrial site monitoring
- 2-pin MIL-C-5015 two-pin socket output

## Specifications:

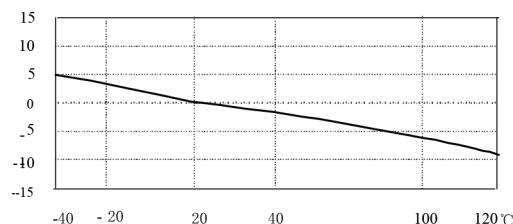
Sensitivity (20±5℃)	100 mV/g
Measurement Range (pk)	±50 g
Max Transverse Sensitivity	<5%
Frequency Response (±10%)	1~9,000 Hz
(±3dB)	0.4~12,000 Hz
Amplitude linearity	≤1%
Operating Temp. Range	-40~+120 ℃
Temperature Response	See Graph
Shock Limit(pk)	2000 g
Noise(rms)	<50 μV
Output Impedance	<100 Ω
Operating Voltage(Constant current source)	18~28 VDC
Operating Current	2~10 mA
DC Bias Voltage	12±2 VDC
Case Isolation	≥10 <sup>8</sup> Ω
Mounting	1/4-28
Sensing Element	Piezoelectric Ceramics
Sensing Geometry	Shear
Case Material	304 Stainless steel
Sealing	IP65
Weight	~75 g
Output	Top 5/8-24 2-pin Socket
Accessories	
Certificate	Calibration parameters
1/4-28 Stud	one
3106A(5015)Plug, Cable(RVVP)	one (3m), one end free



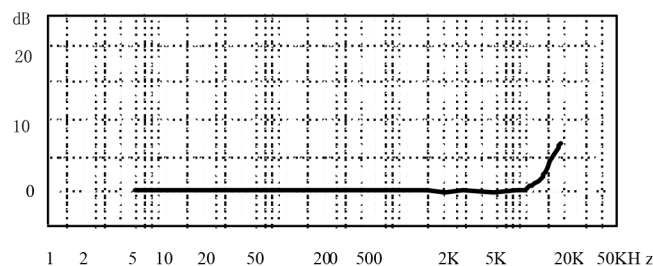
5/8-24



Dimensions



Temperature Response



Frequency Response